

2012 Imagery

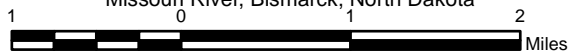
Legend

- Oahe Rangelines
- Existing Bank Stabilization Structures
- ⊕ USGS Gaging Station


South Bismarck Sediment Management Study
Project Vicinity Map

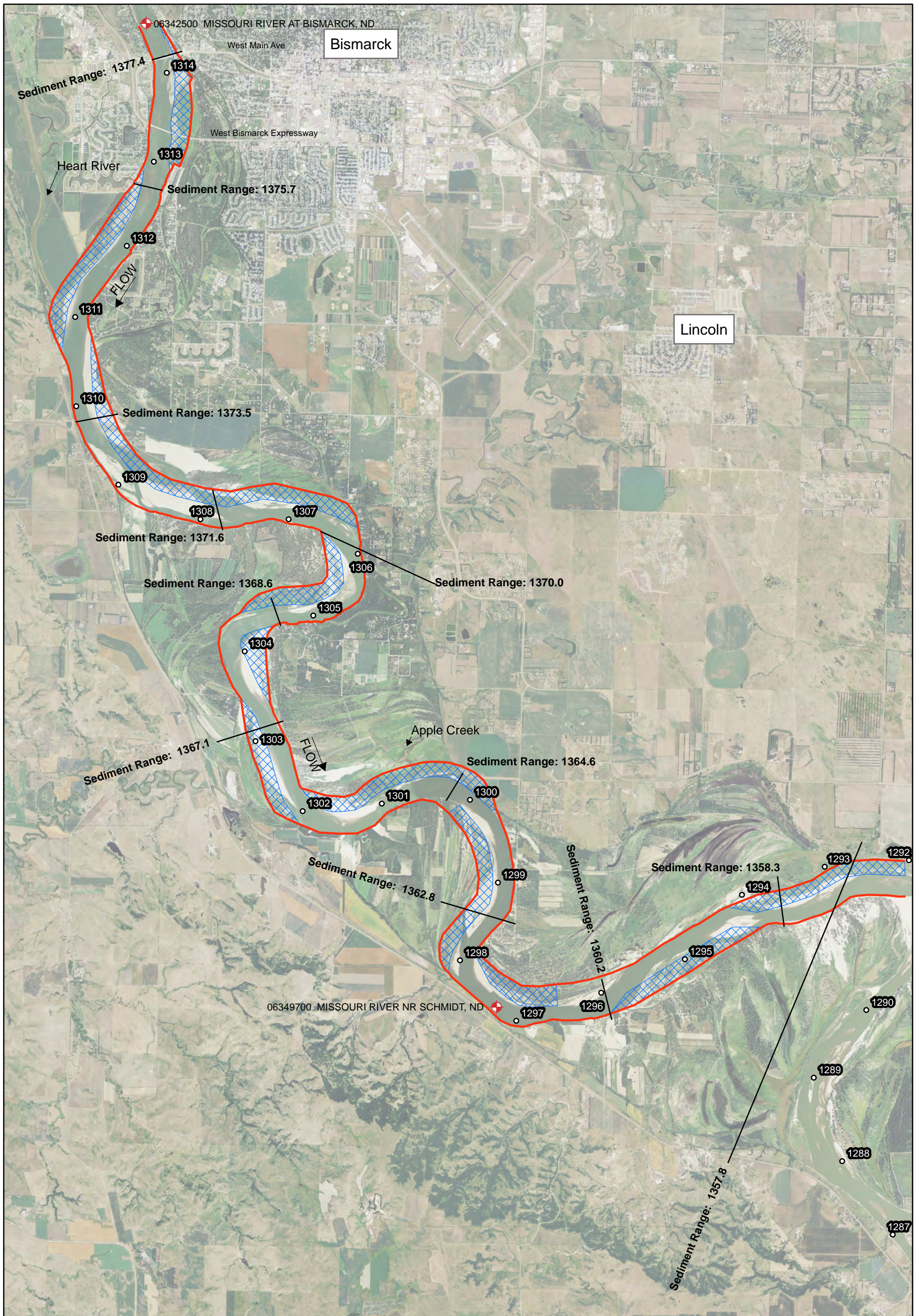
RM 1292-1315

Missouri River, Bismarck, North Dakota



Disclaimer: The United States government and USACE furnishes this data and the recipient accepts and uses it with the express understanding that the government makes no warranties, expressed or implied, concerning the accuracy, completeness, reliability, usability, or suitability for any particular purpose of the information and data furnished. The United States shall be under no liability whatsoever to any person by reason of any use made thereof. Data displayed on this map are approximations derived from GIS layers and should not be used in place of survey data or legal land descriptions.

CENWO-ED-HF	
Produced By: D.B.P.	 US Army Corps of Engineers Omaha District
Production Date: 5/29/2013	
Revised By: AJR	
Revision Date:	
File Location: R:\EDH_PUB\IDAN\bismarckArcMap	



2012 Imagery

Legend

- Oahe Rangelines
Formation Channel Width - 630m
- Upper Bound Sandbar Presence
Formation Channel Width - 370m
- ▨ Lower Bound Sandbar Presence

USGS Gaging Station

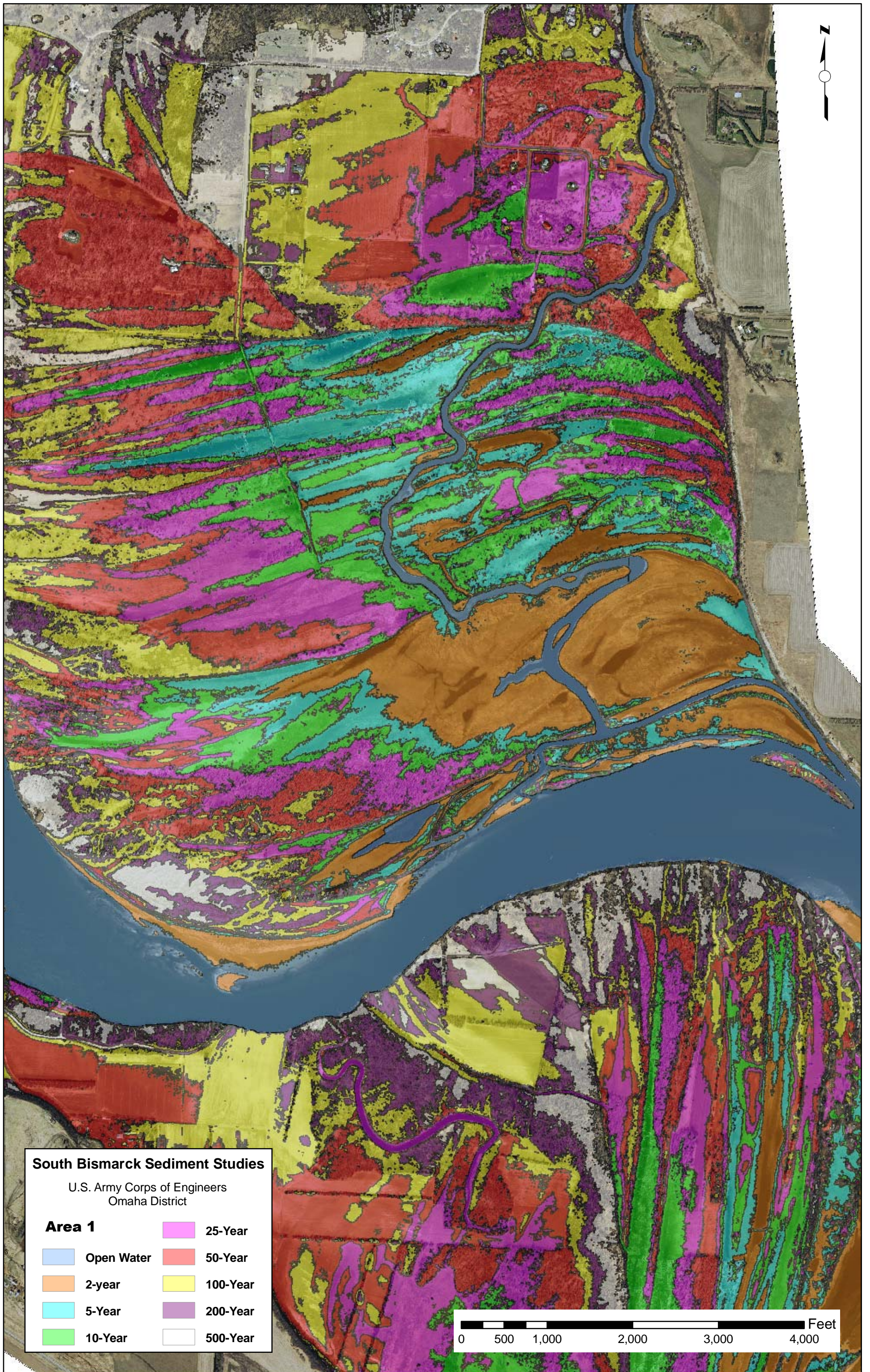
South Bismarck Sediment Management Study
 Conceptual View of Sandbar Presence by Channel Width
 RM 1292-1315
 Missouri River, Bismarck, North Dakota

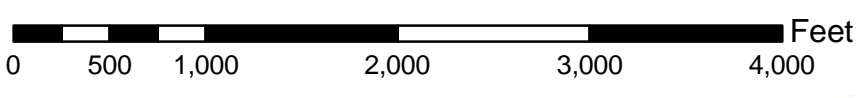
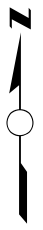
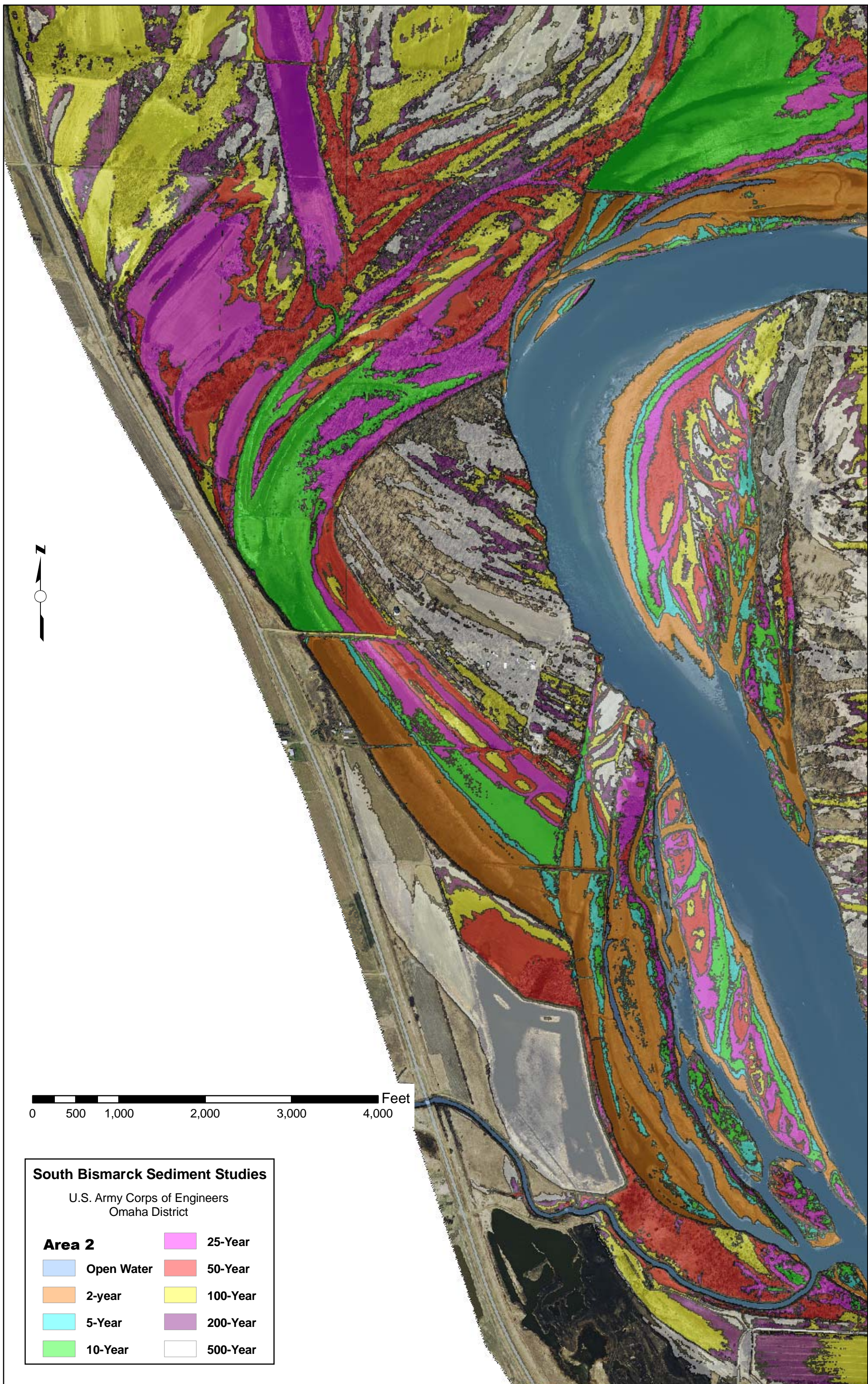


Disclaimer: The United States government and USACE furnishes this data and the recipient accepts and uses it with the express understanding that the government makes no warranties, expressed or implied, concerning the accuracy, completeness, reliability, usability, or suitability for any particular purpose of the information and data furnished. The United States shall be under no liability whatsoever to any person by reason of any use made thereof. Data displayed on this map are approximations derived from GIS layers and should not be used in place of survey data or legal land descriptions.



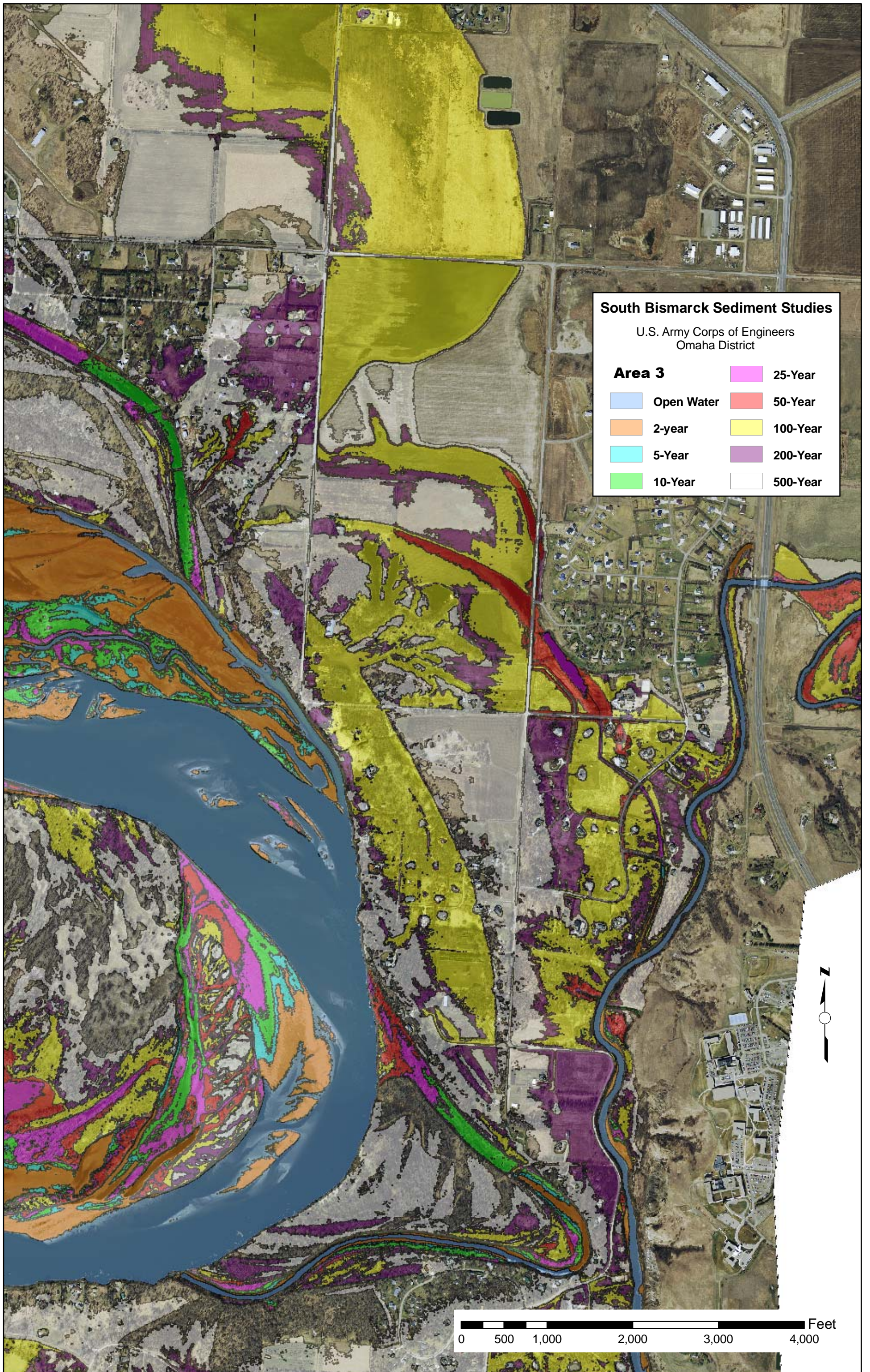
CENWO-ED-HF	
Produced By: D.B.P.	 US Army Corps of Engineers Omaha District
Production Date: 5/29/2013	
Revised By: AJR	
Revision Date:	
File Location: R:\EDH_PUB\IDAN\bismarck\ArcMap	





South Bismarck Sediment Studies
 U.S. Army Corps of Engineers
 Omaha District

Area 2			
Open Water	25-Year	50-Year	
2-year	100-Year	200-Year	
5-Year	500-Year		
10-Year			

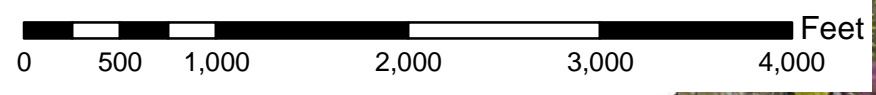


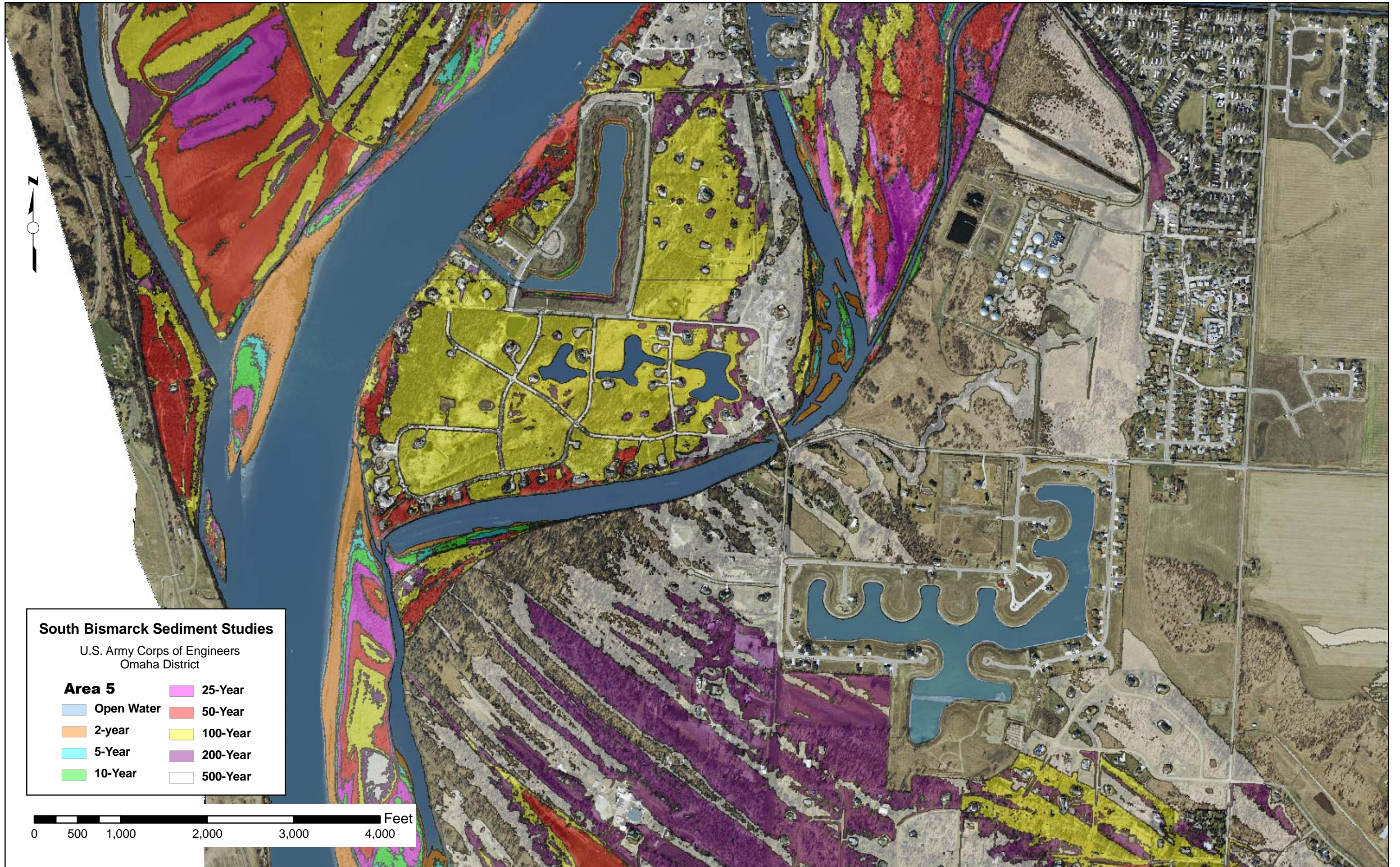


South Bismarck Sediment Studies
U.S. Army Corps of Engineers
Omaha District

Area 4

Open Water	25-Year
2-year	50-Year
5-Year	100-Year
10-Year	200-Year
	500-Year





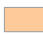

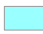

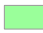




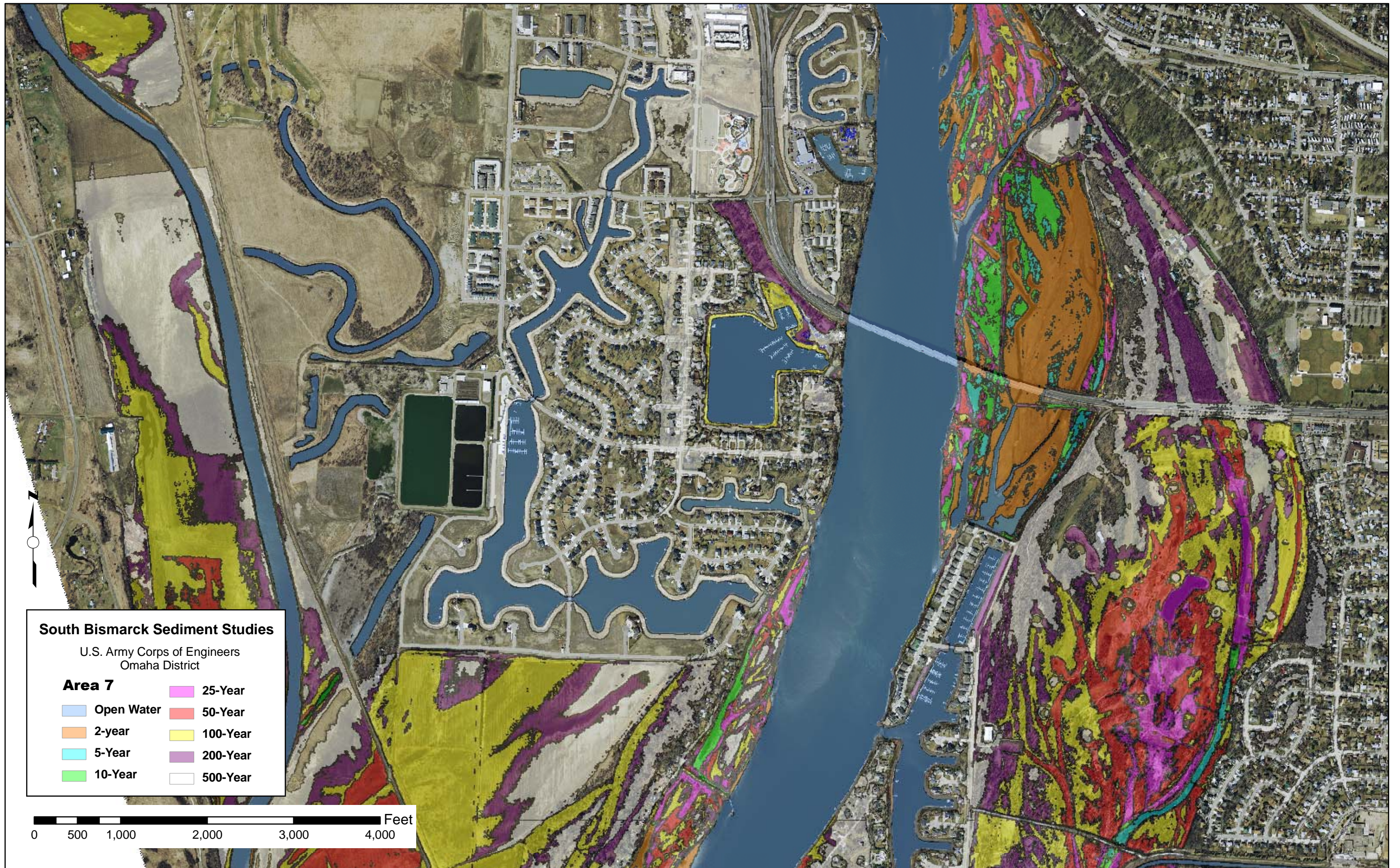


0 500 1,000 2,000 3,000 4,000 Feet

South Bismarck Sediment Studies
 U.S. Army Corps of Engineers
 Omaha District



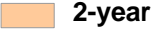

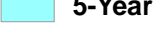




Area 6

 Open Water	 25-Year
 2-year	 50-Year
 5-Year	 100-Year
 10-Year	 200-Year
	 500-Year

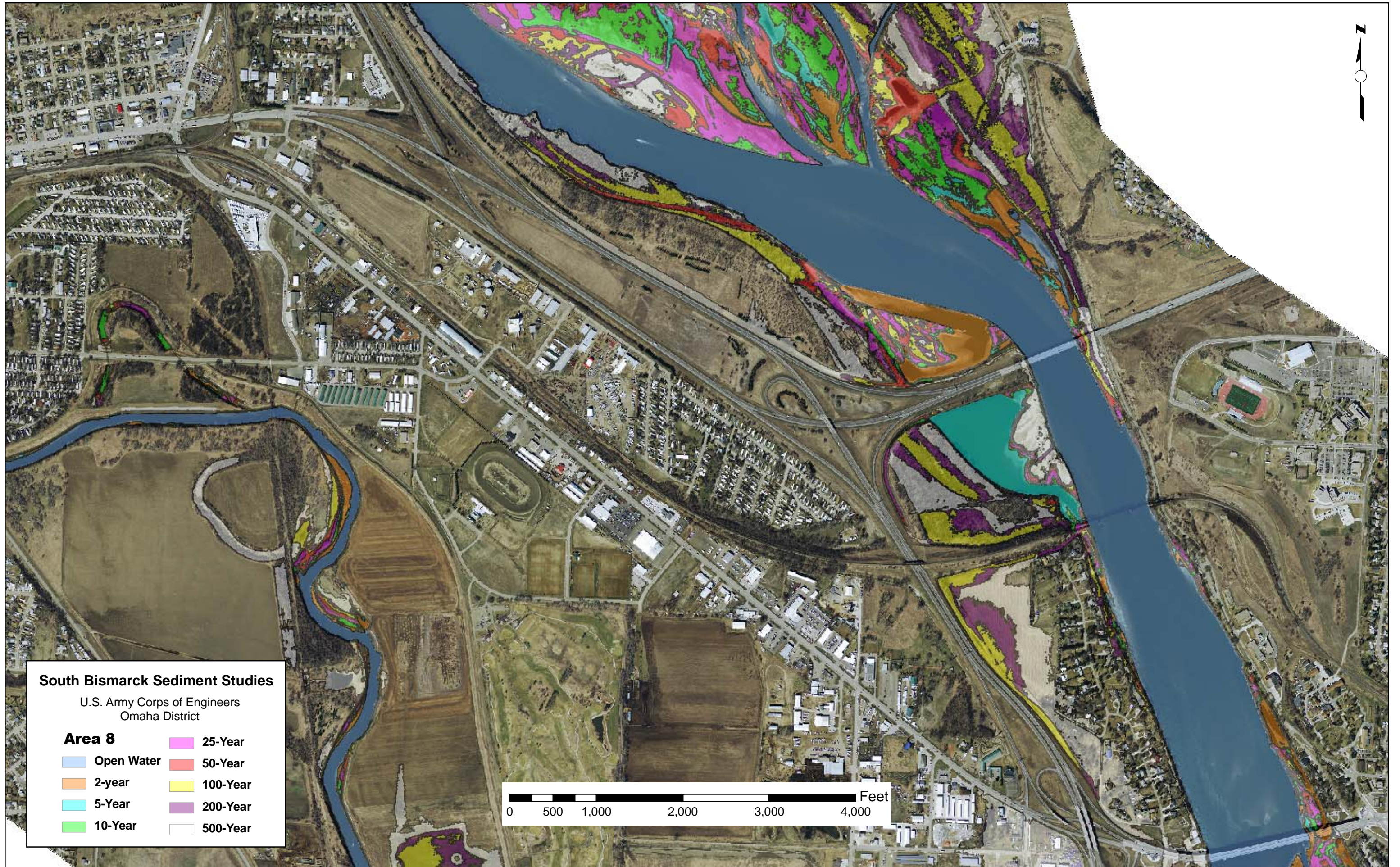


South Bismarck Sediment Studies

U.S. Army Corps of Engineers
Omaha District

- Area 7**
- | | |
|--|--|
|  Open Water |  25-Year |
|  2-year |  50-Year |
|  5-Year |  100-Year |
|  10-Year |  200-Year |
| |  500-Year |






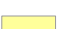
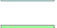


0 500 1,000 2,000 3,000 4,000 Feet



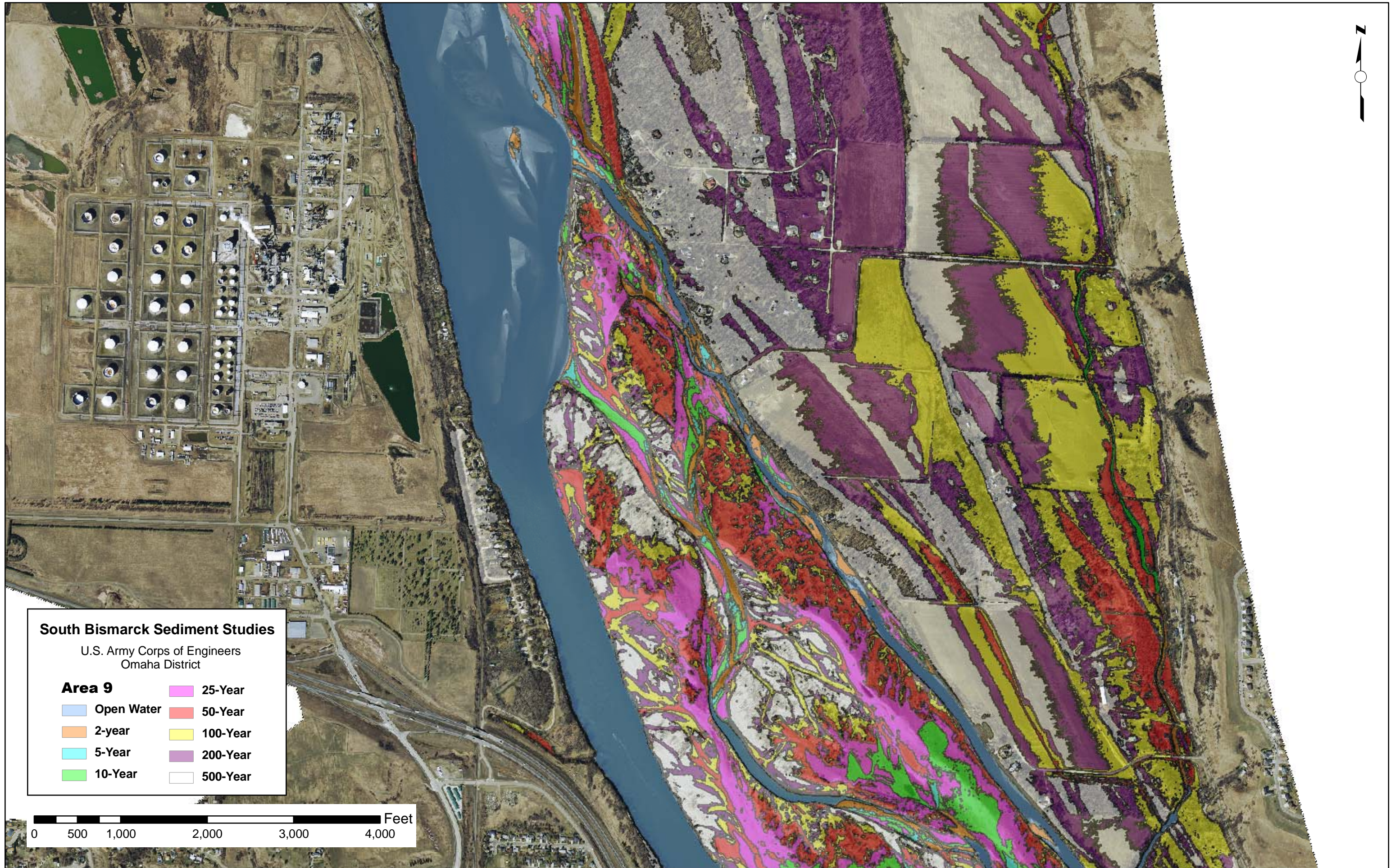
South Bismarck Sediment Studies

U.S. Army Corps of Engineers
Omaha District

Area 8

- | | |
|--|--|
|  Open Water |  25-Year |
|  2-year |  50-Year |
|  5-Year |  100-Year |
|  10-Year |  200-Year |
| |  500-Year |

0 500 1,000 2,000 3,000 4,000 Feet



South Bismarck Sediment Studies

U.S. Army Corps of Engineers
Omaha District

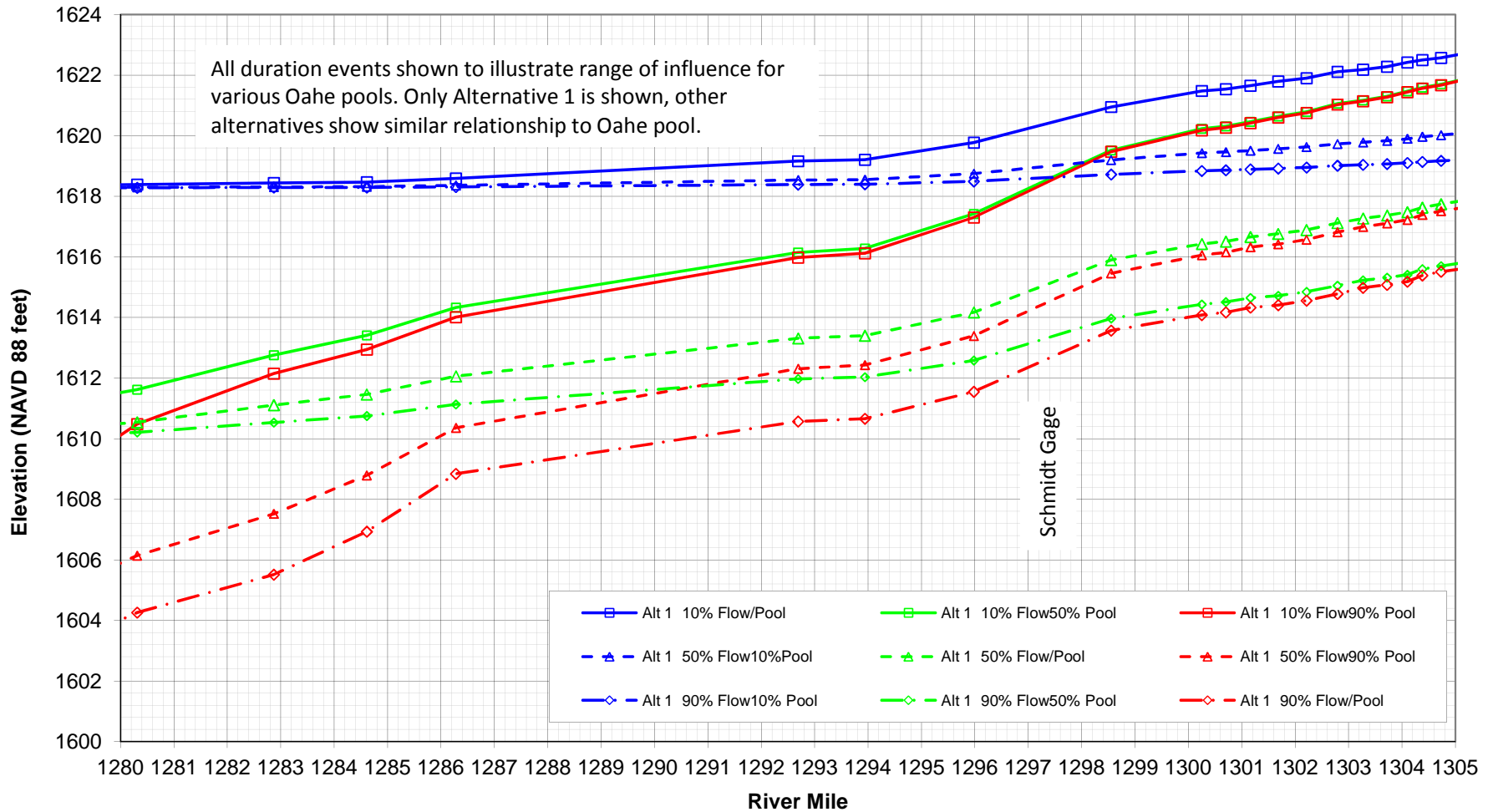
Area 9

- Open Water
- 2-year
- 5-Year
- 10-Year

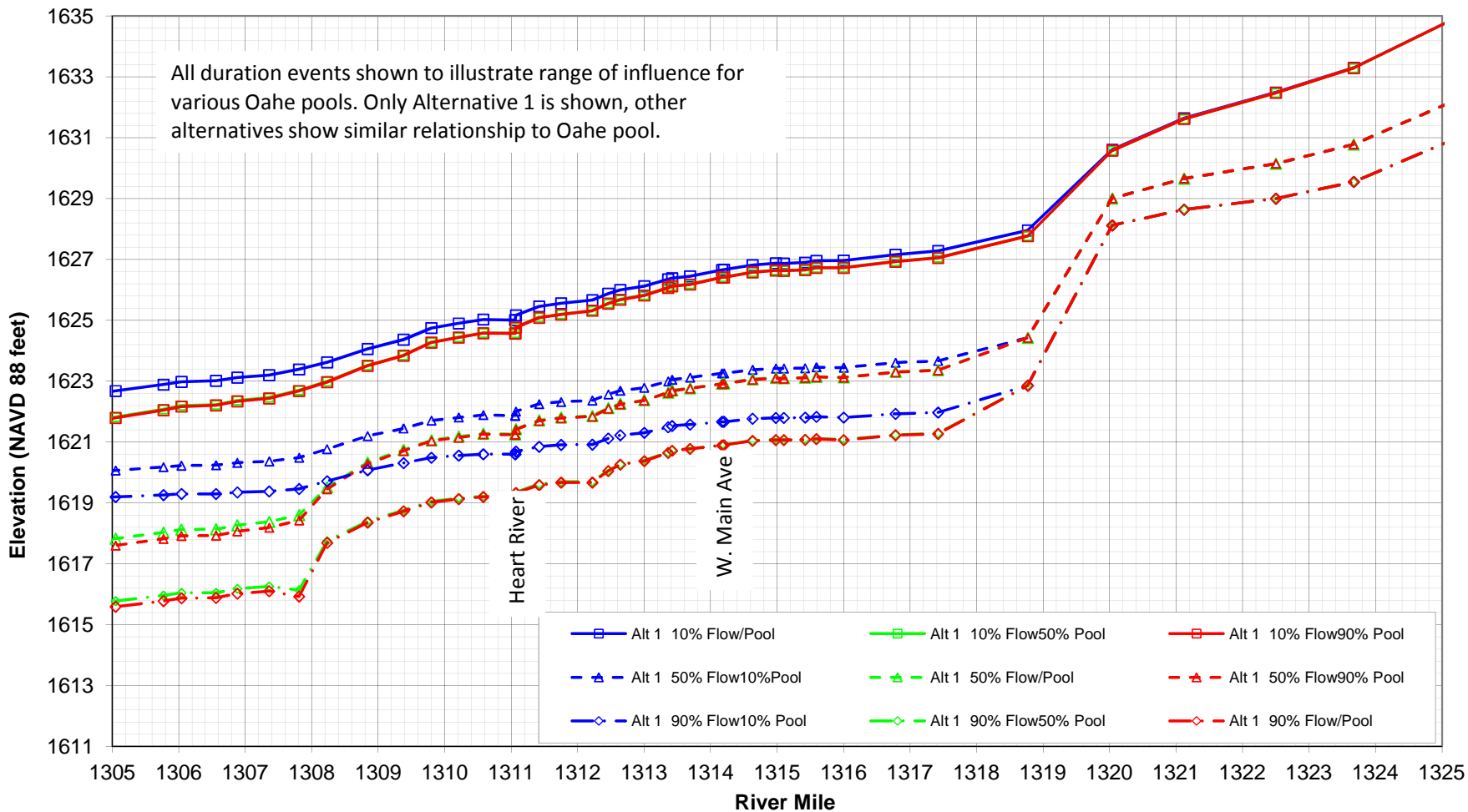
- 25-Year
- 50-Year
- 100-Year
- 200-Year
- 500-Year

0 500 1,000 2,000 3,000 4,000 Feet

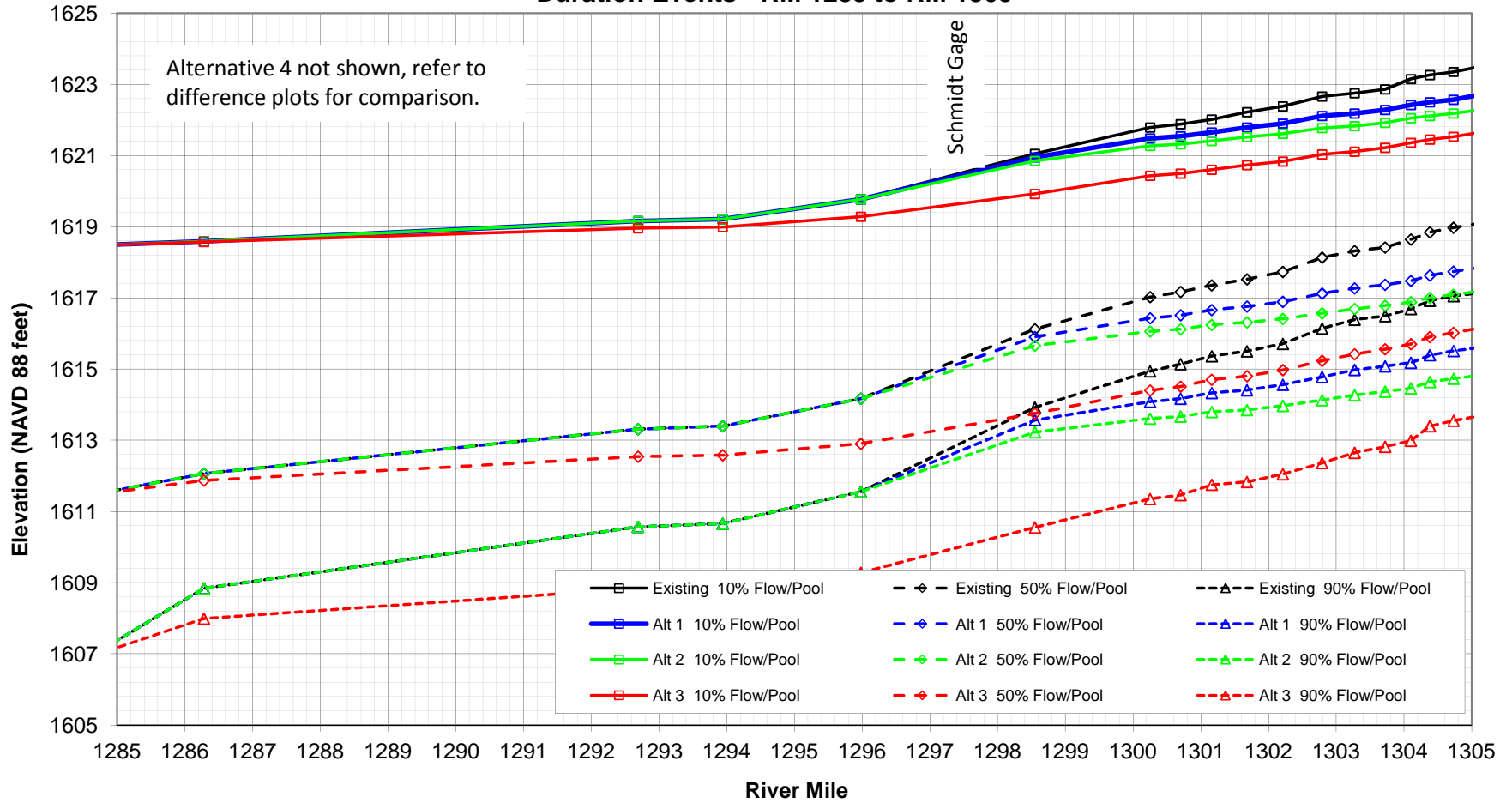
Missouri River Bismarck Area - Computed Profiles for All Duration Events Alternative 1 - RM 1280 to 1305



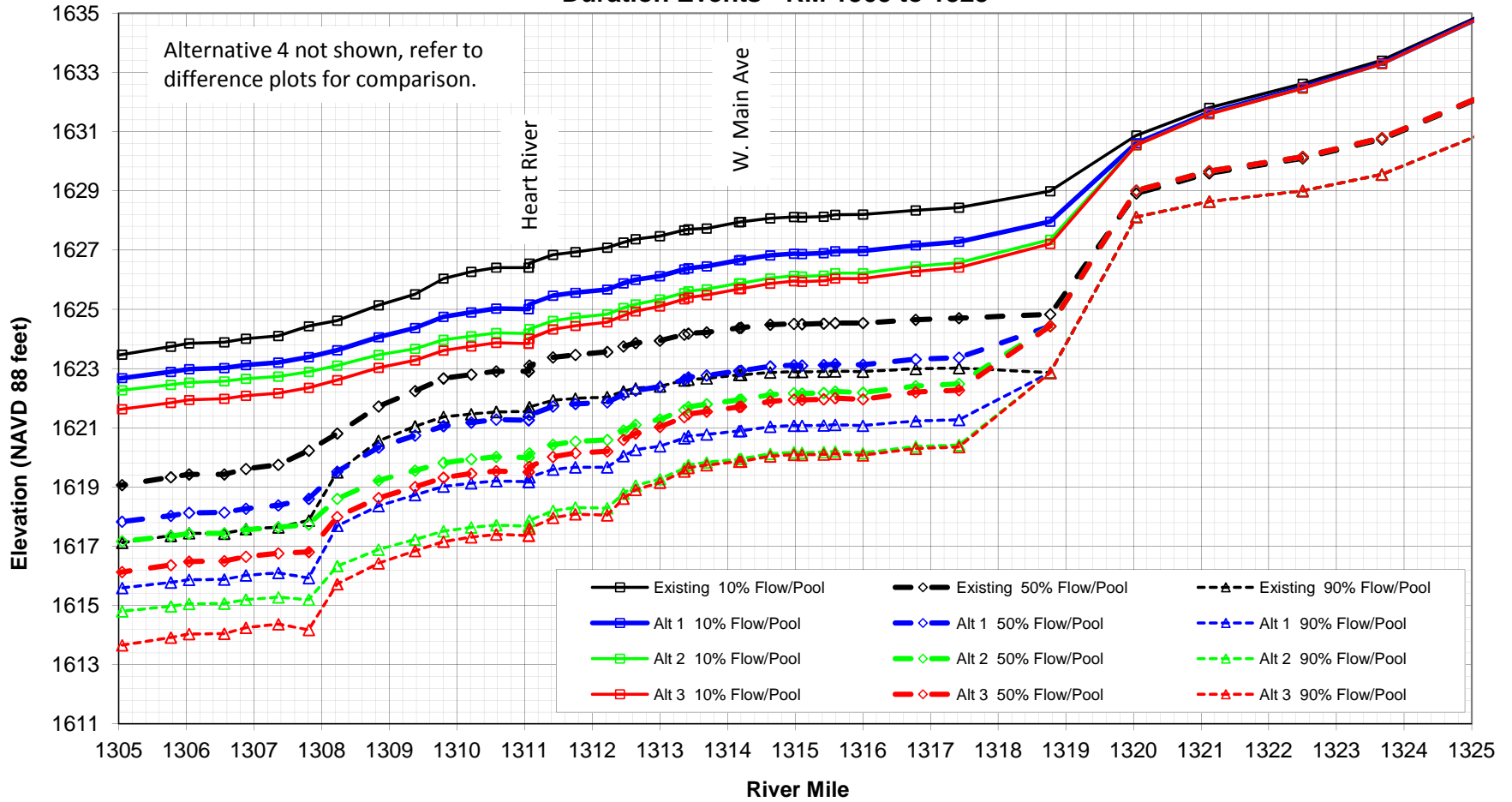
Missouri River Bismarck Area - Computed Profiles for All Duration Events Alternative 1 - RM 1305 to 1325



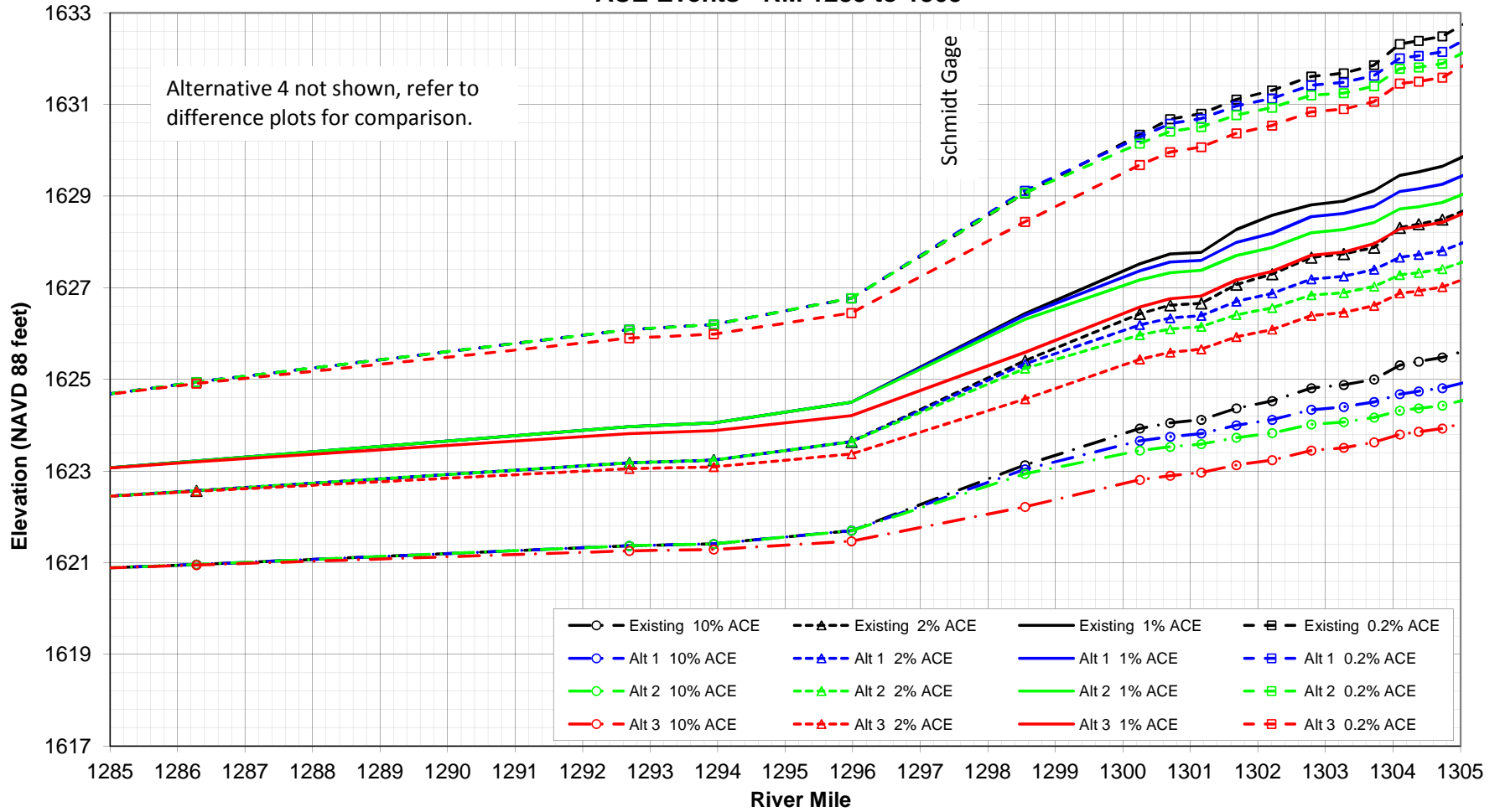
Missouri River Bismarck Area - Existing and Alternative Comparison Duration Events - RM 1285 to RM 1305



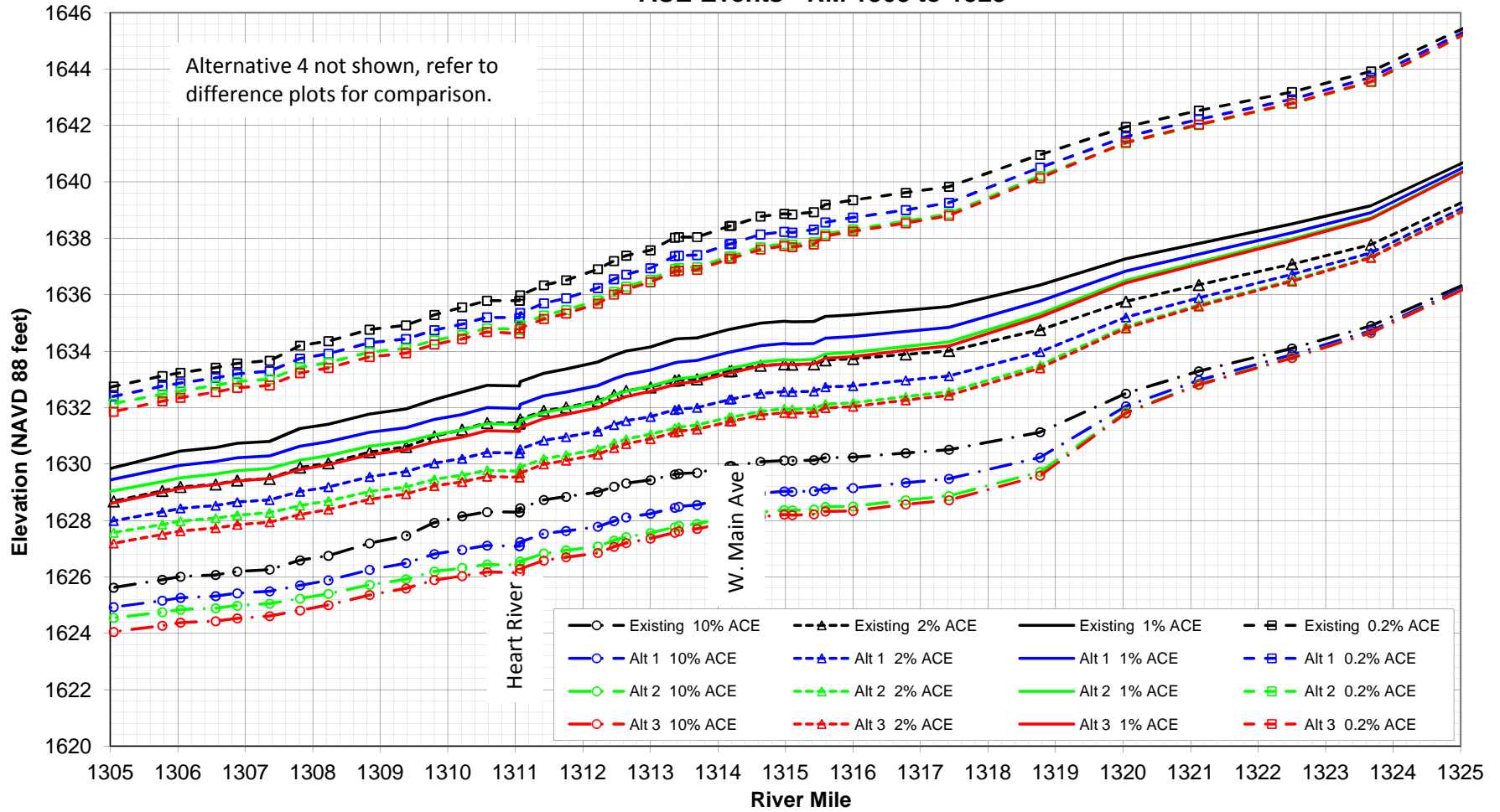
Missouri River Bismarck Area - Existing and Alternative Comparison Duration Events - RM 1305 to 1325



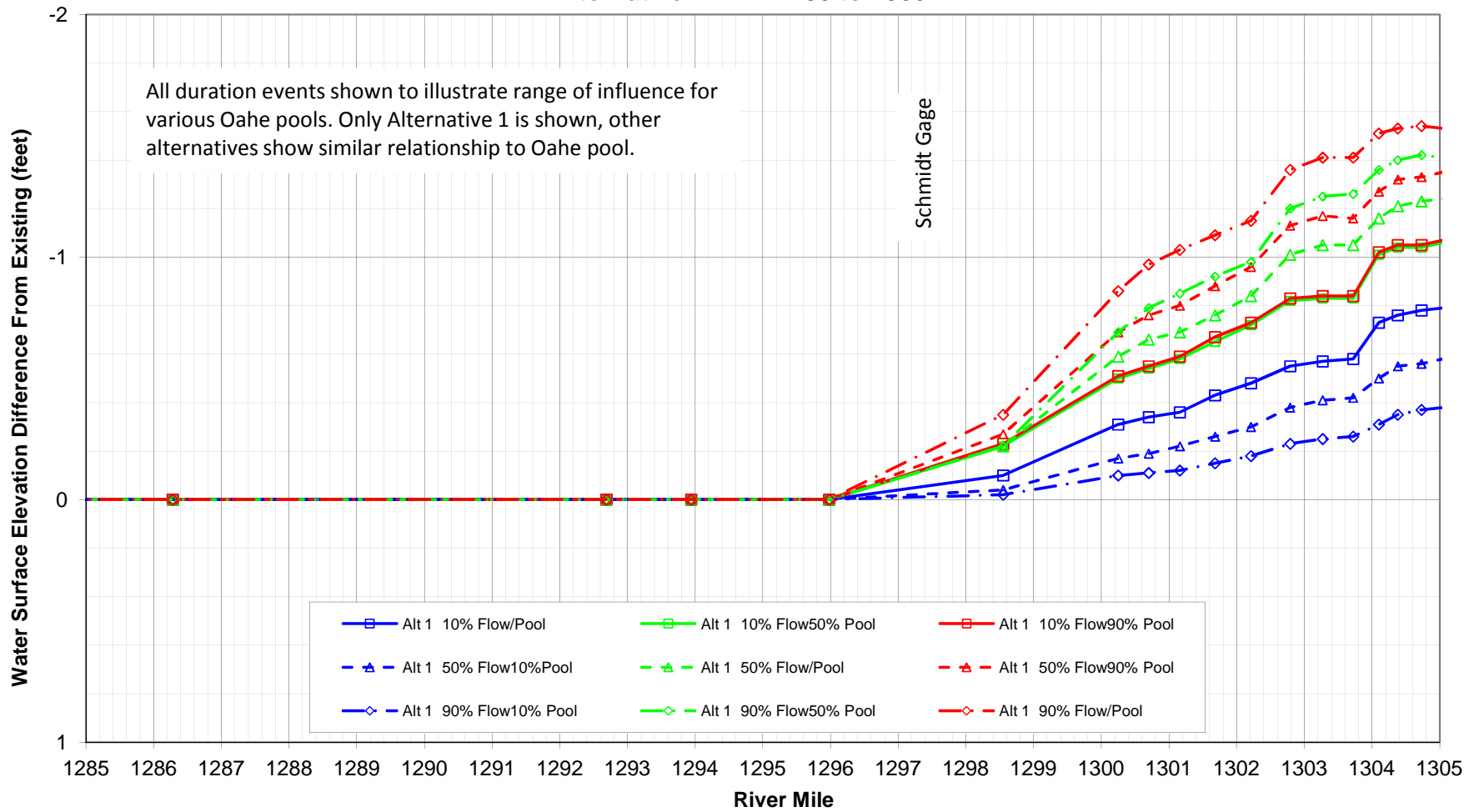
Missouri River Bismarck Area - Existing and Alternative Comparison ACE Events - RM 1285 to 1305



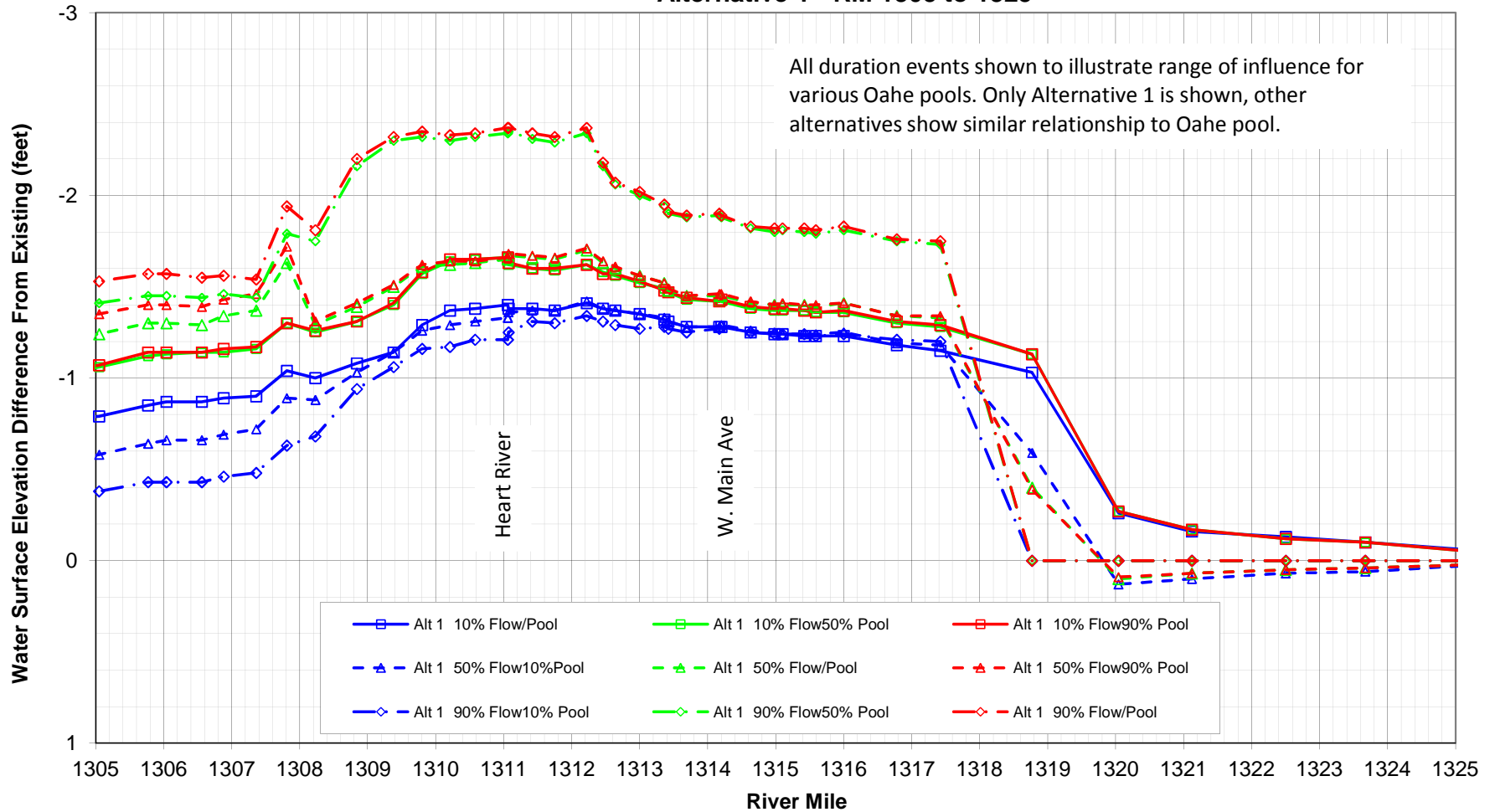
Missouri River Bismarck Area - Existing and Alternative Profile Comparison ACE Events - RM 1305 to 1325



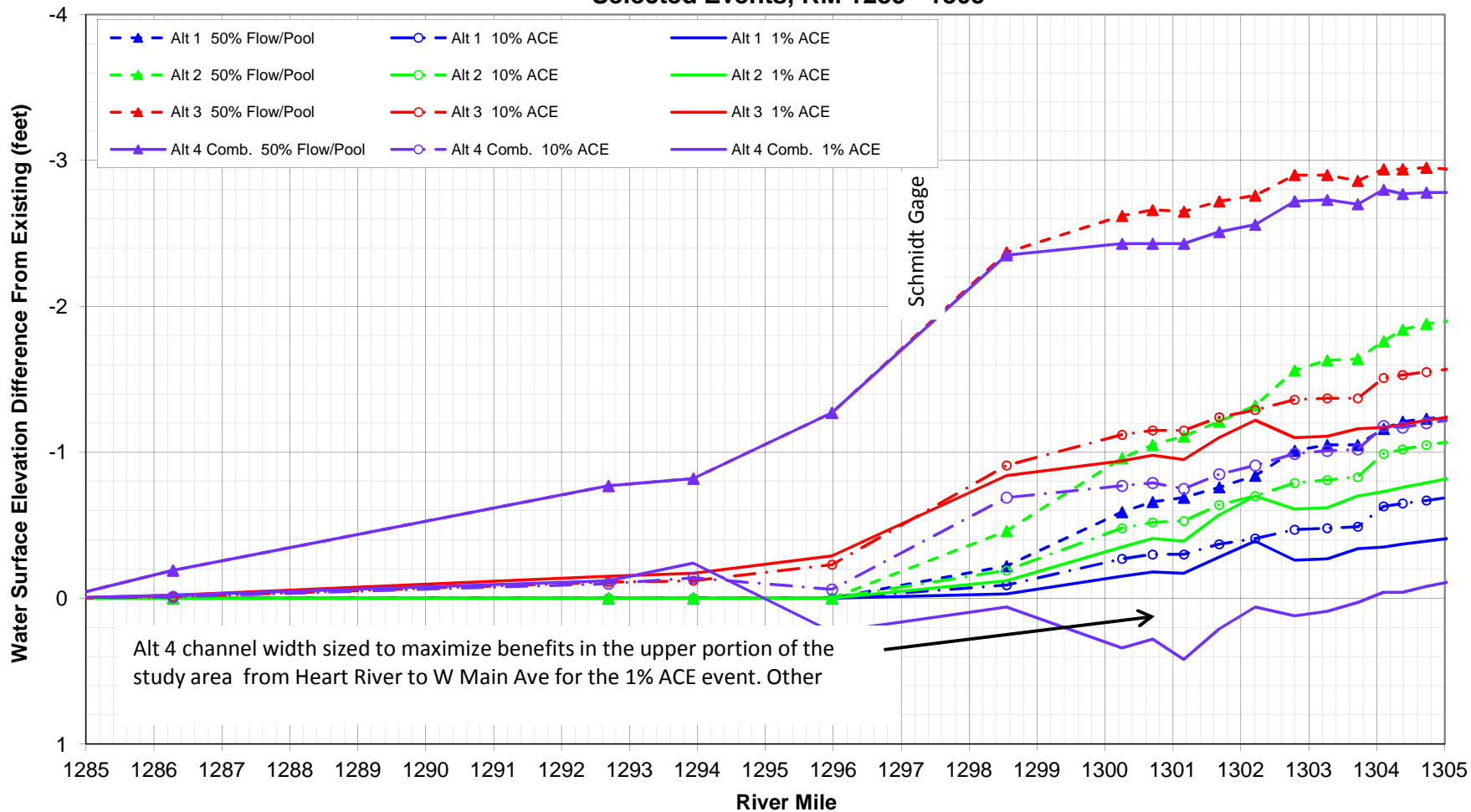
Missouri River Bismarck Area - Difference From Existing for All Duration Events Alternative 1 - RM 1285 to 1305



Missouri River Bismarck Area - Difference From Existing for All Duration Events Alternative 1 - RM 1305 to 1325



Missouri River Bismarck Area - All Alternatives Difference From Existing Selected Events, RM 1285 - 1305



Missouri River Bismarck Area - All Alternative Difference From Existing Selected Events, RM 1305 - 1325

